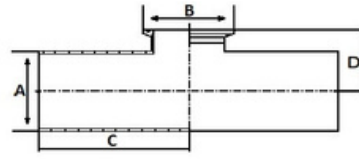


DN	A	B	C	D	Article 316
					B426201901231
¾" - ½"	19.05	25.4	50.8	25.4	B426202501231
1" - ½"	25.4	25.4	54.0	28.6	B426203802531
1½" - 1"	38.1	50.5	60.3	34.9	B426205001231
2" - ¾"	50.8	12.7	73.0	41.3	B426205001931
2"-1"	50.8	25.4	73.0	41.3	B426205002531
2" - 1½"	50.8	50.5	73.0	41.3	B426205003831
2" - 1½"	50.8	50.5	73.0	41.3	B426206301231
2½" - ½"	63.5	25.4	79.4	47.6	B426206301931
2½" - ¾"	63.5	25.4	79.4	47.6	B426206302531
2½" - 1"	63.5	50.5	79.4	47.6	B426206303831
2½" - 1½"	63.5	50.5	79.4	47.6	B426206305031
2½" - 2"	63.5	64.0	79.4	47.6	B426207601231
3" - ½"	76.2	25.4	85.7	54.0	B426207601931
3" - ¾"	76.2	25.4	85.7	54.0	B426207602531
3"-1"	76.2	50.5	85.7	54.0	B426207603831
3" - 1½"	76.2	50.5	85.7	54.0	B426207605031
3"-2"	76.2	64.0	85.7	54.0	B426207606331
3" - 2½"	76.2	77.5	85.7	54.0	B426210101231
4" - ½"	101.6	25.4	104.8	66.7	B426210101931
4" - ¾"	101.6	25.4	104.8	66.7	B426210102531
4"-1"	101.6	50.5	104.8	66.7	B426210103831
4" - 1½"	101.6	50.5	104.8	66.7	B426210105031
4"-2"	101.6	64.0	104.8	66.7	B426210106331
4" - 2½"	101.6	77.5	104.8	66.7	B426210107631
4"-3"	101.6	91.0	104.8	66.7	B426215201231
6" - ½"	152.4	25.4	142.9	92.1	B426215201931
6" - ¾"	152.4	25.4	142.9	92.1	B426215202531
6"-1"	152.4	50.5	142.9	92.1	B426215203831
6" - 1½"	152.4	38.1	142.9	92.1	B426215205031
6"-2"	152.4	64.0	142.9	92.1	B426215206331
6" - 2½"	152.4	77.5	142.9	92.1	B426215207631
6"-3"	152.4	91.0	142.9	92.1	B426215210131
6"-4"	152.4	119.0	142.9	95.3	



Article properties

According to	ASME BPE
Material	1.4404 (316L)
Internal	SF1 Ra=0,5 μm Metal blank
External	SF1 Ra=1,0 μm Polished